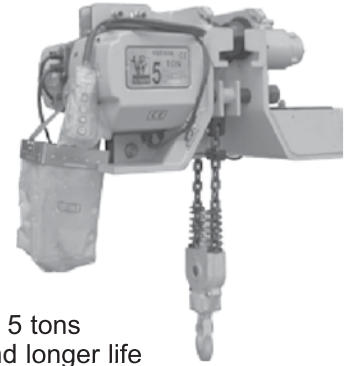
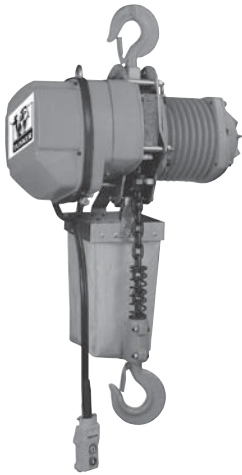


Tusker® Electric Chain Hoists (YS)

YSL - 3 Phase, Single Speed
 YSS - 3 Phase, Single Speed
 YSLD - 3 Phase, Dual Speed
 YSSD - 3 Phase, Dual Speed

YST - 3 Phase, Single Speed



Features:

- Top and bottom limit switches
- Fitted with anti phase relay cut out device
- Pendant control operated at 24 volts for added safety
- Available in 380 Volt / 550 Volt
- Ideal for heavy duty applications
- Failsafe electromagnetic brake for added safety
- Manufactured to ISO 9001 QAS
- Available in extra low headroom hoist/crane combinations up to 5 tons
- Fitted with GR80 case hardened load chain for added safety and longer life
- Totally enclosed construction with aluminium alloy motor housing + cooling fins allows for 40% continuous operation

| Product Code | Model | Working Load Limit (tonne) | Test Load Applied Kg | No. of Falls Reeving | Lifting Speed m/min | Lifting Motor Output Kw | Load Chain Size | Net Mass | Gross Mass |
|--------------|----------|----------------------------|----------------------|----------------------|---------------------|-------------------------|-----------------|----------|------------|
| P404 86190 | YSL 0.50 | 0.5 | 0.625 | 1 | 6.7 | 1.5 | 7.1 x 20.2 | 50.5 | 53 |
| P404 86191 | YSL 100 | 1 | 1.25 | 1 | 4.7 | 1.5 | 7.1 x 20.2 | 50.5 | 53 |
| P404 861911 | YSLD 100 | 1 | 1.25 | 1 | 4.7 / 1.6 | 1.5 | 7.1 x 20.2 | 50.5 | 53 |
| P404 86201 | YSL 200 | 2 | 2.5 | 2 | 2.3 | 1.8 | 7.1 x 20.2 | 57 | 59 |
| P404 86192 | YSS 200 | 2 | 2.5 | 1 | 6.6 | 3.7 | 10 x 30 | 125 | 155 |
| P404 86198 | YSSD 200 | 2 | 2.5 | 1 | 6.6 / 2.3 | 3.7 | 10 x 30 | 125 | 155 |
| P404 86193 | YSS 250 | 2.5 | 3.125 | 1 | 5.2 | 3.7 | 11.2 x 34 | 130 | 160 |
| P404 86194 | YSS 300 | 3 | 3.75 | 2 | 4.3 | 3.7 | 10 x 30 | 140 | 170 |
| P404 86199 | YSSD 300 | 3 | 3.75 | 2 | 4.3 / 1.4 | 3.7 | 10 x 30 | 140 | 170 |
| P404 86195 | YSS 500 | 5 | 6.25 | 2 | 2.6 | 3.7 | 11.2 x 34 | 153 | 183 |
| P404 86200 | YSSD 500 | 5 | 6.25 | 2 | 2.6 / 0.9 | 3.7 | 11.2 x 34 | 153 | 183 |
| P406 86218 | YST 500 | 5 | 6.25 | 2 | 2.6 | 3.7 | 11.2 x 34 | 365 | - |
| P404 86196 | YSS 750 | 7.5 | 9.375 | 3 | 1.8 | 3.7 | 11.2 x 34 | 195 | 230 |
| P404 86197 | YSS 1000 | 10 | 12.5 | 4 | 2.6 | 2 X 3 | 11.2 x 34 | 410 | 470 |

DIMENSIONS:

| WLL (Tonne) | TYPE | H | A | B | C | D | E | F | I | J | K | L | M | N |
|-------------|------|------|-----|-----|-----|-----|-----------------------------|-----|----|----|----|----|----|----|
| 0.5 | YSL | 570 | 505 | 245 | 260 | 240 | 115 | 125 | 40 | 30 | 33 | 30 | 28 | 22 |
| 1 | YSL | 570 | 505 | 245 | 260 | 240 | 115 | 125 | 40 | 30 | 33 | 30 | 28 | 22 |
| 2 | YSL | 700 | 505 | 245 | 260 | 240 | 175 | 65 | 40 | 30 | 40 | 30 | 28 | 28 |
| 2 | YSS | 835 | 640 | 326 | 314 | 340 | 190 | 150 | 60 | 47 | 60 | 47 | 35 | 35 |
| 3 | YSS | 960 | 640 | 326 | 314 | 340 | 190 | 150 | 60 | 47 | 60 | 47 | 35 | 35 |
| 5 | YSS | 1030 | 640 | 326 | 314 | 340 | 190 | 150 | 60 | 47 | 60 | 47 | 44 | 44 |
| 5 | YST | 765 | 640 | 925 | 423 | 502 | Extra Low Head Hoist | | | | | | | |
| 7.5 | YSS | 1050 | 640 | 326 | 314 | 480 | 190 | 290 | 80 | 60 | 70 | 60 | 65 | 50 |
| 10 | YSS | 1270 | 640 | 326 | 314 | 970 | 370 | 375 | - | - | 80 | 60 | - | 65 |

