

# Tusker® special lifting attachments



## Pipe/Round materials lifting

- Suitable for Concrete, Steel & PVC pipes
- Wood (Logs)
- Rubbish & rubble (special jaws)
- Jaws are available to suit various applications eg. painted or machined surfaces
- 400-1200mm diameter
- WLL 1.0t - 2.0t



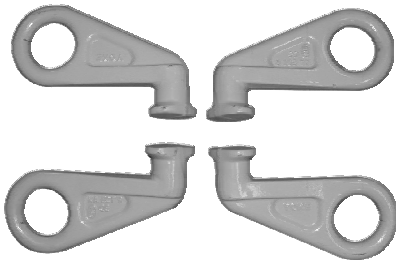
## Gentle grip (non marking) clamp

- Polished granite & marble
- Glass
- Aluminium, Brass, Copper, Stainless Steel, etc.
- Plywood
- 4mm - 120mm thickness
- WLL 1.0t - 2.0t



## Multiple application clamp - JAWS TO SUIT

- Tyre lifting
- Sack lifting
- Wood beams
- Pallet pulling
- Jaw design to suit application
- 60-400mm jaw capacity
- WLL 0.5t - 1.0t



## Container lifting systems (supplied in sets of 4. 2 LH/2RH or 4 straight)

Model	Product Code	WLL Tonnes Set of 4	Chain Angle		Type	
MKVA	BO2005094	50	0 - 45°		Bottom Lifting	
K:192mm	E:70mm	F:46mm	T:25mm	G:75mm	H:48mm	Mass 4kg

