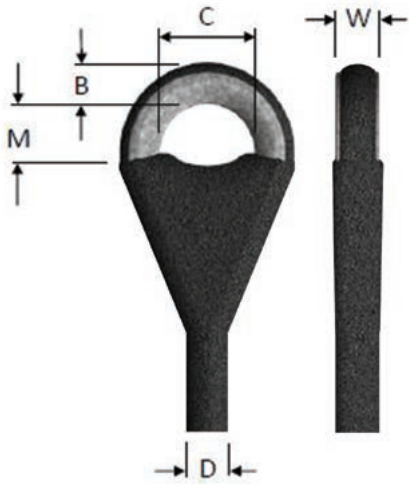


Heavy Duty Towing Straps



HIGH STRENGTH STEEL ROUND MACHINED EYES

Custom designed and machined eyes are created from high strength, low alloy steel, hollow bar. A radius is machined onto the inside face of the bore to suit many types of coupling links and also pins of appropriately sized shackles.

| Break Strength | 30 tonne | 50 tonne | 70 tonne | 100 tonne |
|--|-------------------------------------|-----------------------------------|------------------------------------|------------------------------------|
| DIAMETER C | Ø56mm | Ø56mm | Ø63mm | Ø100mm |
| B | 36mm | 63mm | 38mm | 48mm |
| M** **Rubber flaps in thimbles can be trimmed to suit | 45-48mm | 45-48mm | 52-56mm | 70mm |
| D | 36mm | 46mm | 50mm | 56mm |
| W | 34mm | 44mm | 56mm | 70mm |
| Maximum GVW ² Severely bogged vehicle ³ | 7 tonne | 15 tonne | 20 tonne | 35 tonne |
| Recommended coupling | 8.5-17 tonne S grade shackle pin | 1-25 tonne S grade shackle pin | 17-35 tonne S grade shackle pin | 25-42 tonne S grade shackle pin |
| | Coupling link 16mm, 18-20mm | Coupling link 22mm | Coupling link 26 mm | Coupling link 32mm |



HIGH STRENGTH STEEL ROUND MACHINED EYES

Custom designed and machined eyes are created from high strength, low alloy steel hollow bar. The bore hole is designed to minimize elongation under very high loads and to suit appropriately large shackles. For safety, undersize shackles (Jaw width) will not fit.

| Break Strength | 30 tonne | 50 tonne | 70 tonne | 100 tonne |
|--|---|---|--|---|
| DIAMETER C | Ø80mm | Ø80mm | Ø90mm | Ø90mm |
| B | 50mm | 50mm | 54mm | 54mm |
| D | 64mm | 70mm | 80mm | 90mm |
| W | 70mm | 80mm | 100mm | 120mm |
| Maximum GVW ² Severely bogged vehicle ³ | 100 tonne | 140 tonne | 200 tonne | 280 tonne |
| Recommended coupling | S grade shackle pin WLL 35 - 55t Super Shackle pin WLL 40t-85t | S grade shackle pin WLL 42 - 55t Super Shackle pin WLL 55t-85t | S grade shackle pin WLL 55t-85t Super Shackle pin WLL 85t | S grade shackle pin WLL 85t Super Shackle pin WLL 120t |