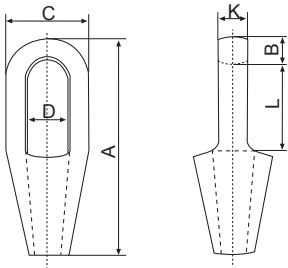


Closed Spelter Sockets

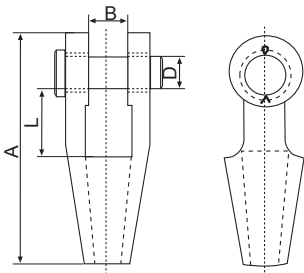
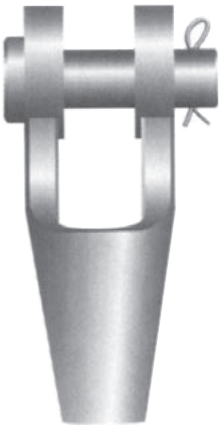
- Material: GSt 52-3
- Safety factor: 5 times WLL = minimum breaking strength
- Finish: Painted or galvanised



| Working load Limit | Dia wire Rope | Overall Length | Overall Width | Inside Bow Width | Inside Bow Length | B | Thickness Bow | Approx Mass per pce |
|--------------------|---------------|----------------|---------------|------------------|-------------------|-----|---------------|---------------------|
| Tonne | mm | A | C | D | L | B | K | kg |
| 6 | 20-22 | 255 | 92 | 47 | 90 | 33 | 38 | 3.7 |
| 10 | 24-26 | 254 | 105 | 57 | 99 | 36 | 45 | 5.7 |
| 14 | 28 | 282 | 114 | 63 | 116 | 39 | 51 | 7.5 |
| 17.5 | 32-35 | 318 | 127 | 72 | 130 | 43 | 58 | 11 |
| 20 | 38 | 358 | 139 | 77 | 144 | 53 | 70 | 13 |
| 28 | 40 | 390 | 147 | 82 | 169 | 52 | 70 | 16 |
| 40 | 44-48 | 454 | 171 | 89 | 198 | 55 | 76 | 26 |
| 45 | 52-54 | 522 | 194 | 96 | 224 | 62 | 82 | 36 |
| 60 | 52-60 | 548 | 218 | 109 | 247 | 73 | 94 | 48 |
| 75 | 64-67 | 598 | 241 | 142 | 275 | 80 | 104 | 64 |
| 80 | 70-73 | 648 | 273 | 159 | 286 | 80 | 124 | 100 |
| 90 | 76-79 | 692 | 291 | 172 | 310 | 80 | 134 | 125 |
| 100 | 83-86 | 743 | 311 | 184 | 311 | 102 | 146 | 147 |
| 115 | 89-92 | 787 | 330 | 197 | 330 | 102 | 159 | 181 |
| 160 | 95-102 | 845 | 362 | 216 | 356 | 108 | 178 | 245 |

Open Spelter Sockets

- Material GSt 52-3
- Safety factor: 5 times WLL = minimum breaking strength
- Finish: Painted or galvanised



| Working Load Limit | Dia Wire Rope | Overall Length | Inside Width | Pin Dia | Inside Length | Approx Mass per pce |
|--------------------|---------------|----------------|--------------|---------|---------------|---------------------|
| Tonne | mm | A | B | D | L | kg |
| 5 | 18-19 | 205 | 38 | 35 | 64 | 3.2 |
| 6.3 | 20-22 | 235 | 43 | 41 | 69 | 4.7 |
| 10 | 23-26 | 275 | 45 | 51 | 71 | 7 |
| 14 | 27-30 | 307 | 59 | 57 | 88 | 11 |
| 17 | 31-36 | 339 | 63 | 63 | 97 | 15 |
| 20 | 37-39 | 409 | 76 | 70 | 132 | 21 |
| 28 | 40-42 | 416 | 76 | 76 | 128 | 25 |
| 40 | 43-48 | 468 | 89 | 89 | 134 | 39 |
| 45 | 49-54 | 552 | 103 | 95 | 181 | 57 |
| 60 | 55-60 | 603 | 112 | 108 | 203 | 75 |
| 75 | 61-68 | 653 | 127 | 121 | 213 | 114 |
| 80 | 69-75 | 696 | 133 | 127 | 216 | 143 |
| 90 | 76-80 | 740 | 145 | 134 | 225 | 172 |
| 100 | 81-86 | 776 | 159 | 140 | 228 | 197 |
| 115 | 87-93 | 834 | 171 | 152 | 242 | 255 |
| 160 | 94-102 | 905 | 191 | 178 | 254 | 355 |